



**ELTEK S.p.A.**

Strada Valenza 5/A 15033 Casale Monferrato (AL) • T. +39 0142335511  
appliance@eltekgroup.it • www.eltekgroup.it

SAVE  
MUCH  
MORE  
THAN  
TIME.



**THE CLEVER SOLUTION TO FLOOD PREVENTION.**

The Water Block valve is an overflow safety device that controls the maximum consumption of water, simply measuring the water volume passing through it. When consumption goes beyond a preset limit, the Water Block activates an internal valve to restrict water flow and to prevent flooding, keeping the surrounding area safe and clean.

**WATER  
BLOCK**



## WATER BLOCK

### **BLOCK IT BEFORE IT ALL RUNS OUT.**

Saving time usually means saving money. That's even more true when saving time means saving water. And saving you from floods.

How? The Water Block is an overflow safety device that controls the maximum consumption of water between 5 and 50 (1.3 - 13 US gal) liters and any anomaly concerning the normal usage of water in domestic, professional, and commercial environments.

Thanks to advanced technology, the Water Block is a clever mechanical device able to measure the volume of water passing through it, without any external energy. If the amount of water goes beyond a preset limit, the Water Block stops the flow to avoid flooding, keeping the surrounding area in a safe condition until a cause can be determined. Otherwise, if the water volume does not exceed the set value, the Water Block will mechanically and automatically reset to restart a new measurement cycle.

Every water pipe controlled by a Water Block becomes a safe checkpoint of water flow, working independently from all appliances linked to the water system.

Water Block is simply located between the appliance input and the water system output, without requiring professional assembly.

# WATER BLOCK

## IT GOES WITH THE FLOW.

**WASHING MACHINES, DISH WASHERS, STEAM DRYERS, REFRIGERATORS, ICE MAKERS.**  
Every domestic or professional appliance can work safely when the amount of water needed is constantly monitored by the Water Block without any external action or human supervision.

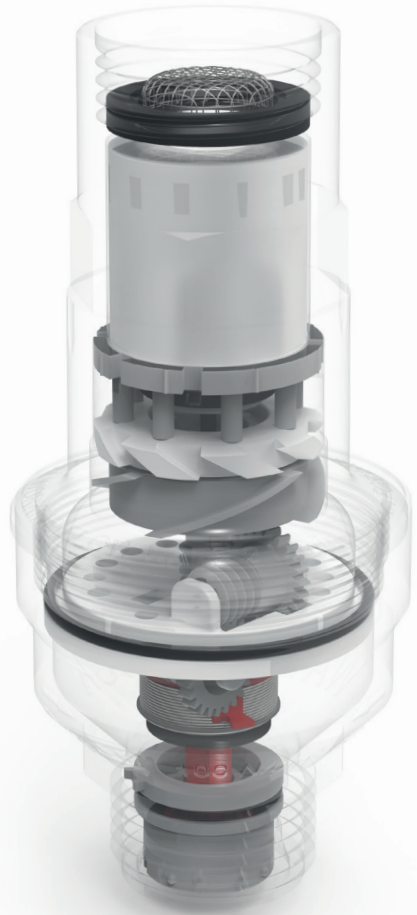


**COMMERCIAL VENDING: COFFEE BREWERS, ICE MACHINES, BEVERAGE DISPENSERS, DRINKING FOUNTAINS.**

Waterblock is the ideal safety system for those business machines constantly working with water flows.

## GARDENING

Waterblock is a clever solution for the gardening activities due to the independent control of water saturation and over extended water use detection.



## GENERAL CHARACTERISTICS:

PART NUMBER: 100041 - 101179 (EU MARKET)  
 101041 - 101279 (US MARKET)  
 PART NAME: WATER BLOCK

3/4" - threaded female connection in the inlet  
 (North America-GHT/Europe-BSP).

3/4" - threaded male connection in the outlet  
 (North America-GHT/Europe-BSP).

Vertical assembly preferred.

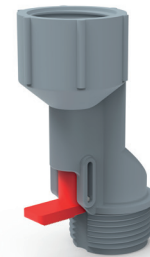
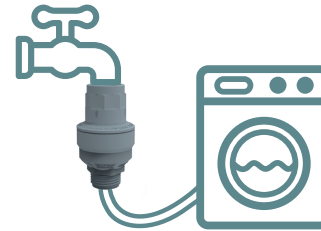
Maximum volume value adjustable through by 10 setting notches.

Every notch increases the set volume of 5 +/- 1 l  
 (1.3 +/- 0.26 gal)

Food grade (WRAS, NSF)

Water Block is also available with embedded powerful magnets (part numbers 101179 EU market - 101279 US market) that inhibit limescale build-up (safe for all drinking-water appliances)

To reset the water block after an overflow detection, it is possible to use the optional reset device p/n 100245



## TECHNICAL DATA:

AMBIENT TEMPERATURE	2 °C ÷ 60 °C
FLUID TEMPERATURE	2 °C ÷ 70 °C
OPERATING PRESSURE	0.02 ÷ 1 MPA (0.2 ÷ 10 BAR)
FLOW RATE	FROM 2 TO 30 L/MIN (FROM 0.53 TO 7.9 GPM)
RESISTANCE TO BURSTING	> 5 MPA (> 50 BAR ) AT 25°C
RATED LIFE-SPAN	> 300.000 LITRE (> 79000 GAL)

## RESET DEVICE

This simple mechanical device allows the user to reset the Water Block after a flood prevention activation without the need to disassemble the water hose. The plunger activation will restart the normal functions of the connected water block.

## LIMESCALE INHIBITOR

The Water Block with an integrated "limescale inhibitor" is able to protect the water system against limescale build-up while detecting the regular flow of water. Thanks to its powerful magnets, the Water Block will turn limescale molecules into non-aggregated powder to be expelled, giving protection to the heating element and water within the appliance infrastructure.