

## GENERAL CHARACTERISTICS:

PART NUMBER: 100041 - 101179 (EU MARKET)  
101041 - 101279 (US MARKET)  
PART NAME: WATER BLOCK

3/4" - threaded female connection in the inlet  
(North America-GHT/Europe-BSP).

3/4" - threaded male connection in the outlet  
(North America-GHT/Europe-BSP).

Vertical assembly preferred.

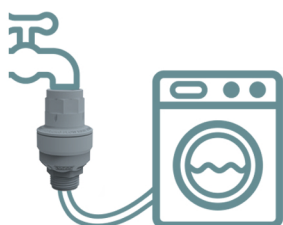
Maximum volume value adjustable through by 10 setting notches.

Every notch increases the set volume of 5 +/- 1 l  
(1.3 +/- 0.26 gal)

Food grade (WRAS, NSF)

Water Block is also available with embedded powerful magnets (part numbers 101179 EU market - 101279 US market) that inhibit limescale build-up (safe for all drinking-water appliances)

To reset the water block after an overflow detection, it is possible to use the optional reset device p/n 100245

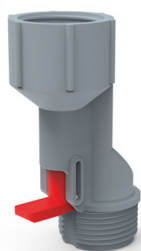


## TECHNICAL DATA:

AMBIENT TEMPERATURE	2 °C ÷ 60 °C
FLUID TEMPERATURE	2 °C ÷ 70 °C
OPERATING PRESSURE	0.02 ÷ 1 MPA (0.2 ÷ 10 BAR)
FLOW RATE	FROM 2 TO 30 L/MIN (FROM 0.53 TO 7.9 GPM)
RESISTANCE TO BURSTING	> 5 MPA ( > 50 BAR ) AT 25°C
RATED LIFE-SPAN	> 300.000 LITRE (> 79000 GAL)

## RESET DEVICE

This simple mechanical device allows the user to reset the Water Block after a flood prevention activation without the need to disassemble the water hose. The plunger activation will restart the normal functions of the connected water block.



## LIMESCALE INHIBITOR

The Water Block with an integrated "limescale inhibitor" is able to protect the water system against limescale build-up while detecting the regular flow of water. Thanks to its powerful magnets, the Water Block will turn limescale molecules into non-aggregated powder to be expelled, giving protection to the heating element and water within the appliance infrastructure.